

your home | made more secure and warm  
whatever the style, period or location



ADVANCE7

Windows & Doors | Homeowners Guide to Security & Thermal Efficiency



Enhanced

**security**

with

ADVANCE7

**PAS 24**

windows & doors

**Protect your family and home  
with high security windows and doors...**

One of the main reasons why we upgrade our windows and doors is to ensure that **we provide protection to our family and home.**

When choosing your new windows and doors, you want to ensure that you are making the right decision to **provide the required level of protection for your family and home.**

A PAS 24 certified window or door gives you the confidence that **your family and home will be protected to a high standard.**

## What does PAS 24 certified actually mean?

This is your guarantee that the production of the window or door you are purchasing is being monitored by a UKAS accredited certification body to ensure compliance with **PAS 24:2016 Enhanced security performance requirements for doorsets and windows in the UK.**

External doorsets and windows intended to offer a level of security suitable for dwellings and other buildings exposed to comparable risk and the specific and the relevant material specific standard for general performance.





What has

# PAS 24 got to do with me?

Surprisingly, a lot! If you're looking to **make your home as secure as possible**, it is important you look for windows and doors that carry the PAS 24 certificate. This will guarantee you **the highest security requirement for your windows and doors**. What is great is that throughout the testing stages, BSI (British Standard Institute) will regularly inspect companies who hold the PAS 24 testing certificate, to ensure the testing procedure is just as good as the first door that was tested. This means all products will go through a thorough test, and not just half a job!

The PAS 24 standard is an extra security measure to ensure windows and doors are up to the security standards, in case you do so happen to have a break in. The testing is based on a burglar trying to manipulate a cylinder, cut-through a slab or panel or force the lock and/or hinge side of a door. On a window forcing entry through the locking points using a selection of tools including 'crow bars', screwdrivers, chisels, drills and blades.

**A PAS 24 Window or Door is a  
SECURE Window or Door!**

## The process for testing and certification...

The manufacturer of the window or door submits a range of window or doors to a UK Accreditation Service (UKAS) accredited test house for testing to PAS 24 and the relevant 'fit for purpose' standards.

**Rigorous testing methods** for forcing entry are carried out to ensure that there can be no failure of the components that make up the window or door.

If successful, certification is issued with regular audits and sample testing carried out to ensure continued compliance.



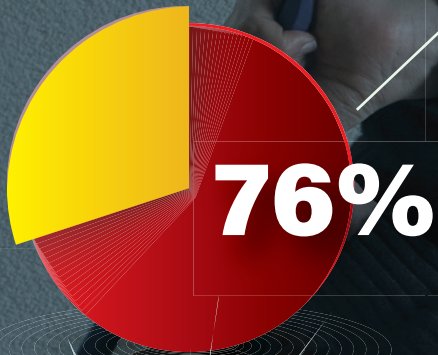
Providing you with  
secure windows and doors and...

**"Total Peace  
of mind..."**



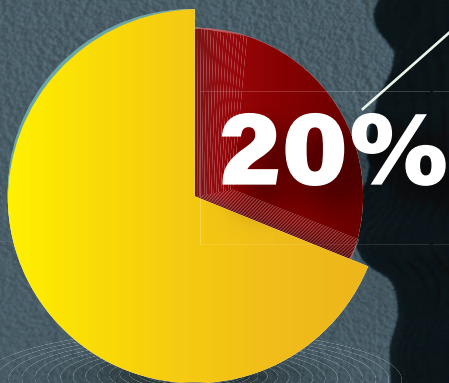
# UK burglary statistics

In **76%** of cases, the burglar will enter **through a door**



- 33%** of burglars will enter by forcing the cylinder / lock open
- 15%** of burglars will enter through a door left unlocked
- 8%** of burglars will break the door or door panel
- 6%** of burglars will enter the property with a key

In **20%** of cases, the burglar will enter **through a window**



- 8%** of burglaries are through forcing the window lock or latch
- 6%** of burglars will cut through or break a windows glass
- 6%** of burglars will enter through an already open window

Source: Burglary Statistics

[www.ons.gov.uk/peoplepopulationandcommunity/crimeandjustice/datasets/natureofcrimeburglary](https://www.ons.gov.uk/peoplepopulationandcommunity/crimeandjustice/datasets/natureofcrimeburglary)



ADVANCE70

# the key to security

for your windows & doors



**49%**

of burglaries  
owing to an inferior  
cylinder, lock, latch,  
panel or slab

Don't become a statistic...

By fitting ADVANCE70 Windows and Doors

**Prevent 41%** of burglaries with  
high security window and door locking systems



Doors - A standard door cylinder can be snapped, picked, drilled or bumped and a burglar can gain access in to your property in less than 30 seconds.



We can fit a Yale high security PAS 24 multi-point locking system with a 3\* TS007 accredited anti-bump, anti-pick, anti-snap and anti-drill cylinder to your door. We can also fit Yale high security PAS 24 multi-point locking systems - enhancing your security!



Windows - An inferior window locking system and latch can be manipulated and forced open in less than 30 seconds.



We can fit a Yale high security PAS 24 window locking system to your windows.

**Prevent 8%** of  
burglaries with a PAS 24 slab  
or panel



A standard door slab or panel can be cut and penetrated allowing an intruder to gain entry to your home.



We use a PAS 24 door slab or panel which is resistant to attack via cutting. This is used in conjunction with the Yale high security PAS 24 multi-point locking system.

ADVANCE70



**YALE SECURITY HARDWARE & ADVANCE 70 WINDOWS AND DOORS**

THE LEADING HOME SECURITY BRAND + THE LEADING WINDOW AND DOOR PROFILE SYSTEM

**TOTAL PEACE OF MIND...**





The **next windows** you choose  
**could save**  
you  
as much  
**as 20%**  
on **your energy** bill...

**With rising energy costs new, thermally efficient windows and doors could save you money...**



## What are Window & Door Energy Ratings?

A window or doors rating is determined by a formula which takes into account the total solar heat transmittance, the amount of the sun's heat which can pass through the glass (usually referred to as g-value); **the U-value of the whole unit** (frame and glass combined), how well the window or door keeps the heat in your home; and the air infiltration through the window or door seals.

To make the Rating standard across all products, a standard window / door size and configuration is used. The resulting value is then placed into a band on the scale G-A, with **A-rated windows and doors being the most energy-efficient**. This makes the system of rating windows and doors consistent with other products which have energy performance labels such as those that will be familiar on washing machines, light bulbs and refrigerators.





How will

# A Rated windows and doors help me?

(and my home!)

A Rated energy efficient windows and doors provide many benefits, other than the obvious financial savings!

Energy efficient glazing will **make your home more comfortable** as it reduces heat loss through the windows and doors which means fewer draughts and colds.

As well as keeping the heat in, energy efficient windows and doors **insulate your home against external noise**, giving you peace and quiet.

Energy efficient glazing also **reduces condensation build up** on the inside of your windows and doors.

For **a more comfortable home** ensure you have energy efficient windows and doors.



More and more people are opting for  
A rated windows as an energy saving measure



**UPDATE**  
NEW as from  
15th June 2022

## Building Regulations Document L

Part L of the building regulations covers conservation of fuel and power. In December 2021, Part L received a revision, updating the regs, which is designed to reduce CO2 emissions by 30% compared to current levels. This came in to effect on 15th June 2022.

For **EXISTING HOMES** (including extensions) the performance of replacement windows must be no worse than the windows being replaced, but with a minimum performance as per below:

**WINDOWS** -  $U_w 1.4 \text{ W/(m}^2\text{K)}$  or a Window Energy Rating Band B

**DOORS** >60% of internal face glazed -  $U_w 1.4 \text{ W/(m}^2\text{K)}$  or Doorset Energy Rating Band C





## 5 CHAMBERS

Multi-chamber  
profile system greatly  
improves heat loss  
from your home

## RTR BAR

Recycled Thermal  
Reinforcement for  
improved thermal  
performance

## GASKETS

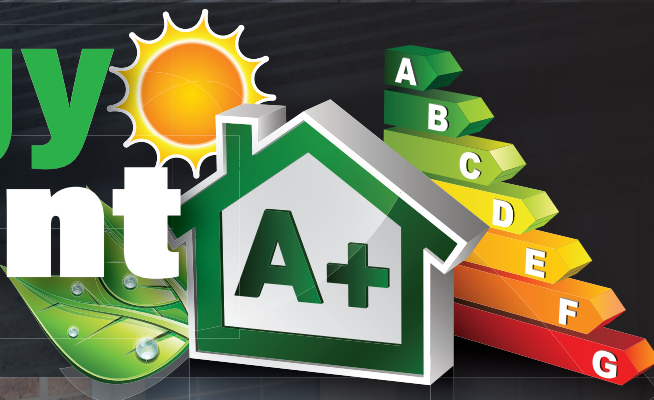
Providing a weather  
tight seal to shut  
out draughts  
and the cold



ADVANCE70

# for **energy** **efficient**

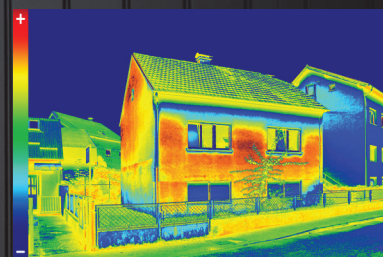
windows & doors



A window and door system for the energy conscious...

Modern PVCu window and door profiles used to make the frames for your home **offer excellent thermal insulation**, as the gaskets and weathertight seals **shut out draughts** while the glazing **reflects the heat** back in to your home.

Advance 70 is a **multi-chamber** window and door profile system and when installed with RTR Bar within the profiles, **greatly reduces the heat loss** from your home.



These aspects will assist in **reducing your energy bills** and **make your home more comfortable**.





How much

# Can **A Rated** windows **save me?**

**Choose a cost effective solution that enables you to get a maximum return on your investment**

Changing the configuration of glass will change the potential outcome of efficiency and the savings of which you may be able to achieve

## GLASS SPECIFICATION

Choosing windows incorporating a low-emissivity glass helps to prevent heat from escaping through the windows, reflecting heat back into your home. This helps windows of any frame type to achieve the highest levels of Window Energy Rating.

**\*With rising energy costs, new energy efficient windows and doors can now save you more than previously stated below...**

## A Guide to Potential Savings

By having double glazing installed in an entirely single glazed house you could save the following each year.

By installing A-rated double glazing to windows in an entirely single-glazed semi-detached gas heated property, you could save \*£145 a year and 335kg of carbon dioxide.

If you installed A++ rated double glazed windows replacing single glazing, the savings could be up to \*£175 a year and 410kg of carbon dioxide.

Source: Energy Saving Trust

<http://www.energysavingtrust.org.uk/home-energy-efficiency/energy-efficient-windows>



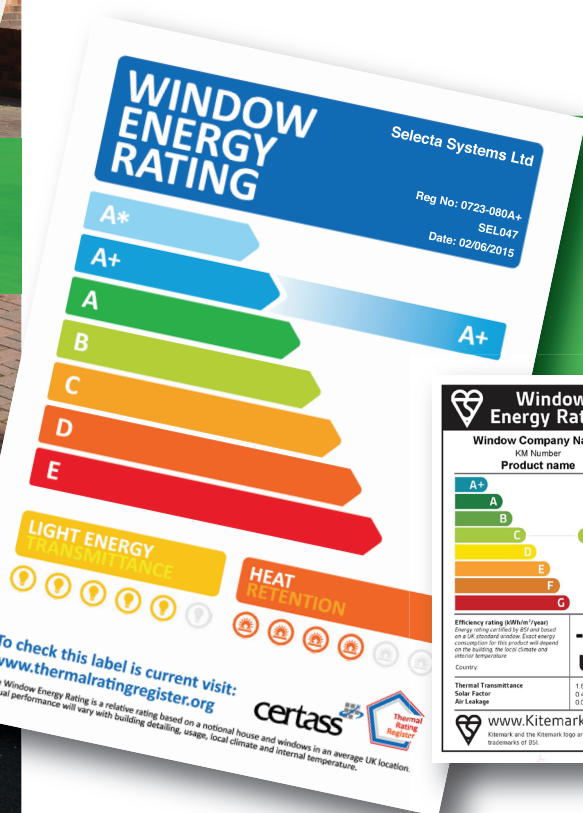
# Improve comfort and reduce your energy bill...

The Window Energy Rating (WER) tells you how energy efficient your windows are. The rating system is based on a scale of G to A+, with A+ windows being the most energy-efficient. The scheme is similar to those seen on household appliances, white goods and light bulbs.

Considering the fact that **up to 25% of the heat within most homes escapes through the windows**, it's worth considering installing new energy-efficient windows in order to save energy and hence money off your energy bills.

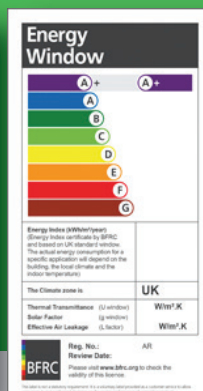
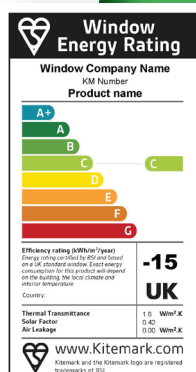
## Energy Rating Labels - A quick guide...

A Window Energy Rating and label apply to a whole window (i.e. the frame and the glass). They do not apply to either the frame or the system or the glass individually. Therefore, it is at the point at which all these components come together to produce a whole window that the Rating and label are obtained.



## Energy Ratings Labels

The labels below are typical of the labels that you should see on your windows. They are supported by registered bodies which audit the window installers;



Certass Thermal Rating Register Scheme  
Website: [www.certass.co.uk](http://www.certass.co.uk)

BSI Kitemark Scheme for WER  
Website: [www.bsigroup.com](http://www.bsigroup.com)

British Fenestration Rating Council WER Scheme  
Website: [www.bfrc.org](http://www.bfrc.org)



your home | made more secure and warm  
whatever the style, period or location

contact us today  
and see how we can make your home more secure and thermally efficient

Your Approved Advance 70 Installer is: